

WINGTRARAY

The drone made for surveyors

It's time to double down on reliability and speed with advanced safety features, an end-to-end workflow and a range of powerful sensors to take on more jobs. Whether surveying cities or rugged terrain, get ready to save time and overhead with fast, accurate data capture.



Fast and cost-effective surveys

- 1360 acres per flight
- Adaptive speed
- End-to-end workflow



Fly with peace of mind—anywhere

- Parachute for OOP
- Obstacle avoidance
- Backup batteries
- Dual telemetry



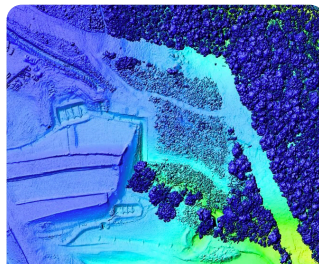
Take on more jobs with one single tool

- Survey urban and rural environments
- Six versatile payloads

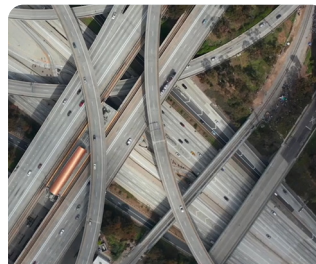
WingtraRAY delivers what actually matters for real survey work



Close-up inspections with mm-level resolution



Efficient mapping for very-large-scale projects



Operations over people and vehicles



Survey-grade results; fastest turnaround in the industry

Wingtra

The true end-to-end surveying solution

From flight planning to CAD and GIS-ready outputs—get ahead with the only aerial survey solution that keeps it all in one, connected toolchain.



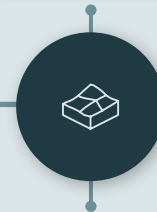
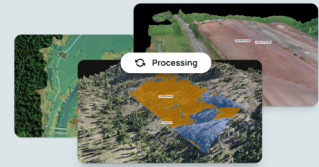
1. Plan

Plan advanced missions and sync them instantly across devices.



2. Capture

Field gear that works together—fast capture, easy accuracy check.



3. Process

Work in any coordinate system and share instantly via link.

Technical specifications

Time to map 100 Ha (250 ac)	10 min*	
Coverage per flight (59 min)	1360 ac / 550 ha*	
Payload Capacity	2.75 lb / 1.250 g	
Telemetry (Radio + Cellular)	2.5 GHz (6 mi / 10 km) LTE (Unlimited)	
Flight Speed (Adaptive)	36 - 49 mph (16-22 m/s)	
Wind Resistance	Gust	40 mph (18 m/s)
	Sustained	27 mph (12 m/s)
Best resolution at 60m (200 ft)	0.1 in/px (2.5 mm/px)**	
Absolute accuracy at 60m (200 ft)	0.1 ft / 3 cm ***	

* With MAP61 at 400 ft and 60% side overlap ** With INSPECT at 200 ft

*** Achievable with all payloads following surveying best practices

CUSTOMER LOYALTY OFFER*

Enjoy a **10% discount on WingtraRAY** and a **25% discount on the MAP⁶¹** payload to upgrade your current drone or extend your fleet.

* Launch offer applicable to existing WingtraONE customers, valid until September 15, 2025.

Engineered in Switzerland to meet the highest global standards



INTERESTED
IN THE SOLUTION?
TALK TO OUR TEAM



It just works.

